

Land Suitability for Sorghum Using Multicriteria Evaluation (MCE) and Analytical Hierarchy Process (AHP) in Bunkure Kano State, Nigeria

¹M. Ahmed and ²D. N. Jeb

¹Department of Geography Bayero University, Kano

²National Center for Remote Sensing, Jos

Abstract: Among many factors limiting agricultural development in Nigeria is the lack of sufficient information on soils and their characteristics. An attempt has been made by this study in generating soil database and mapping out the physicochemical parameters and the suitable areas for sorghum cultivation. The aim of this research is to analyse suitable areas for the cultivation of Sorghum (*Sorghum bicolor* (L.)) Bunkure Local Government Area of Kano State. Fuzzy model, Multi Criteria Evaluation (MCE) and GIS were integrated in this study for land evaluation. Data sourced (parameters) for this study includes; 51 soil samples from a gridded map of the area to the depth of 30 cm. Satellite image (Spot-5) of 5 meter resolutions, Digital Elevation Model (DEM) and Soil characteristics map of the area. The parameters were subsequently integrated in Arc GIS 10.1 to generate the land suitability map for the selected crop. The result of the analysis shows that the area has been dominated with agricultural activities and the distribution of physicochemical parameters shows that pH ranging from 2.90 - 9.66, while Mg with moderate value of 0.04-0.93. The area is generally affected with low OC, Na, Ca, and OM with < 2, 0.01-0.23, 1.05-9.12ppm, and 0.02-1.6% respectively. The medium are N, CEC and K with 0.02-0.96%, 2.09-7.75meq/100g and 0.01 - 1.00 (cmol/kg) while salinity with 0.05-50.92. The results for suitability analysis indicated that about 860.91 ha (8.6%) of land is highly suitable (S1) and 1712.15 ha (17.27%) of the area are moderately suitable (S2). 2407.61 ha (24.29%) the area is found to be marginally suitable (S3) while, 3568.67 ha (36.01%) of the land to be moderately suitable and 1361.88 ha (13.74%) to be not suitable (N). The study concluded that the soil of the area is affected with salinity and low soil nutrients which can be control by proper management, it recommend for proper use of fertilizer (organic and inorganic).

Keywords: Analytical Hierarchy Process (AHP), GIS, Multi Criteria Evaluation MCE, Sorghum, Suitability

I. Introduction

Nigeria, having the largest population of any African country, rapid population growth, a high degree of dependence on agriculture at the household level and large area of low potential (sub humid and sub arid) rainfed farm land, is experiencing predominantly in nutrient depletion scenarios (Mortimore and Harris, 2003).

Land resource is gradually becoming scarce as increase in population places pressure on natural resources. As world population grows: an increase of food supply is urgently needed to meet those demands. According to FAO (2012) on the three decades of agriculture in the sub Saharan region, besides losing export market failed to increase the production of food calories per capital above 2100/day. However, all other major regions in the developing world improved, significantly (Alexandratos, 1995). It was projected that the region could not generate growth on the scale necessary for feeding its growing population and catch up with the predicted average for developing countries of 2730/day (Mortimore and Harris, 2003). Nevertheless, soil productivity depletion is often placed at the center of a nexus of population growth and agricultural decline (Cleaver and Schreiber, 1994; Breman 1998; White and Killick, 2001).

Furthermore, estimates were made by Stoortvogel, Smaling and Janssen (1993) in 38 sub Saharan countries. The result shows that most of the important soil nutrients were lost in the area and the losses were projected to increase the annual nutrient depletion. Also, the study of Henao and Banaante (1999) claimed that 86% of the sub Saharan African countries are losing not less than 60-100 kg/ha/year (World Bank, 2003). Furthermore, a direct link between soil nutrient depletion and food insecurity has been suggested by noting improvements for some major food crops (Gruhn, Goletti and Yudelman 2000).

Lack of soil information has affected most of farming system and management. Ofor, Ibeawuchi and Oparaeke (2009) opined that sorghum has a high demand for nutrients compared to cereals like rice, millet and wheat. This crop require both the major nutrients (N, P and K) and the secondary nutrients (S, Mg, Ca, B, Fe, Cl, Cu

etc.) in adequate amount to ensure good root establishment, vigorous and healthy growth and increased yields. Agbede *et al* (2009) affirmed that lower soil organic matter, total N and available P attributed to the yield of sorghum in some soils of Nigeria. Among many factors limiting agricultural development in Nigeria is the lack of sufficient information on soils and their characteristics (Adamu, 2012).

Dugje, Kamara and. Ajeigbe (2009) found out that majority of the farmers in Bunkure (study area) cultivate sorghum and millet. Sorghum cultivation was ranked highest in some part of the area, villages like Zangon- Buhari and Kalalawa in Bunkure have the highest record compared with other crops. This shows the need for soil evaluation in the area with a view to knowing the most suitable area for sorghum cultivation. However, for the purpose of this study Multi Criteria Evaluation (MCE) technique was applied for the land evaluation in the area.

Land suitability evaluation is classification of lands in terms of their suitability for a specific land use. According to Food and Agricultural Organization (FAO, 1976), suitability is a function of crop requirements and land characteristics. Suitability is a measure of how well the qualities of land unit match the requirements of a particular form of land use. The objective of land suitability and evaluation is the prediction of inherent capacity of the land units without deterioration (Elaalem, Comber and Fisher, 2001). Physical land evaluation is a prerequisite for land-use planning, because it guides decisions on optimal use of land resources (Van Ranst, Tang, Groenemans, and Sinthurahat, 1996). In multi-criteria decision making which is utilized for determination of optimum land use type for an area, unequal importance of different land criteria is taken into consideration.

Multi Criteria Decision Making (MCDM) or Multi Criteria Evaluation (MCE) has been developed to improve spatial decision making when a set of alternatives need to be evaluated on the basis of conflicting and incommensurate criteria. MCE is an effective tool for multiple criteria decision-making issues (Malczewski, 2006) and aims to investigate a number of choice possibilities in light of not only multiple criteria but also multiple objectives (Carver, 1991). Many of GIS-based land suitability analysis approaches are recently developed such as Boolean overlay and modeling for land suitability analysis which could possibly be useful when making analysis that has to do with a decision making.

Nevertheless, the use of modern technology has added more advantage in gathering information through hardware and software which is more efficient. Many systems have been developed including Geographic Information System (GIS). This is capable of systemically storing and analyzing both spatial data and non-spatial data. GIS is used in creating models of a situation by using different criteria. Therefore, applying GIS in land evaluation to provide fundamental information to support in decision making on land use plan seems to be able to reduce problems caused by improper land use. In recent years, there has been increasing interest in integrating GIS capability with multi-criterion decision analysis techniques for spatial planning and management (Sekitani, and Yamaki, (1999); Coulter, Sessions, and Michael (2003); Chakhar and Mousseau, (2008); Chen, Shahbaz and Xevi (2009).

Most of the studies carried out in the area concentrated on the soil fertility or salinity without mapping the distribution of the elements also the past studies used of soil unit and average values for the soil parameters which give a false data for the area concerned (John, Antonio and Randy, 2004) and Poor soil sampling procedures account for more than 90 percent error (Mahler and Tindall, 1990).

Furthermore, an attempt has been made by the Kano State Government in 2009 to produce a suitability map for the cultivation of rice and some few crops in Tomas, Watari and Magaga dam sites (MARDITECH, 2011). The study was limited to some specific areas and also the soil parameters were not mapped.

Tanko (2011) concentrated on the effect of salinity, the study shows that poor drainage arising from the application of irrigated water in the area there by increasing the effect of salinity. While, Baffa (2012) studied the water requirement on crops such as Sugar cane, Garden egg, Rice, Onion, Tomato, and Hot pepper using irrigation farming in the area. The result shows that the cultivation of these crops keep the people of the area busy for both dry and rainy seasons thus, they generate more income than other crops. The study also shows that yield (output) is low, even though, farmers use other means of managing the soil by choosing a fertilizer for a particular crop and it concluded that salinity and other forms of land degradation are the major factor that resulted to low yield. The study did not highlight the distribution and the concentration level of the salinity in the area.

Foli (2012) revealed low fertility of soils of Bunkure is well below critical levels of P and K. Low clay content of 11% on average translated into low availability of the important plant nutrients N, P, and K. This study targeted only the leguminous plants to see the effect of Nitrogen. The study refused to analyse the distribution of the soil elements in the area.

The ground truthing (field visit) information in Bunkure LGA (study area) shows that the selected crop (Sorghum) was intensively cultivated before but today, farmers in the area now apply more fertilizer, compare with the past when only animal dung were used on their farmlands and that form the basis for crop selection.

The main aim of this research is to map out the suitable areas for cultivation of Sorghum in Bunkure Kano State, Nigeria.

II. Study Area

Bunkure LGA is located between Latitude $11^{\circ} 34' 02''\text{N}$ to Latitude $11^{\circ} 46' 05''\text{N}$ of the Equator and between Longitude $8^{\circ} 26' 36''\text{E}$ to Longitude $8^{\circ} 46' 43''\text{E}$ of the Prime Meridian. The study area is comprises of fifteen wards (15) with an aerial extend of 9911.22 Km^2 and is bordered with Dawakin kudu and Kura LGAs by the North, Wudil and Garko LGA by the East while Kibiya at the South Western part of the study area (see Figure 1). The climate of the region experiences four distinct seasons, *Rani*, *Damina*, *Kaka* and *Bazara* closely associated with the movement of the ITD (Maryam, Halima and Umami, 2014).

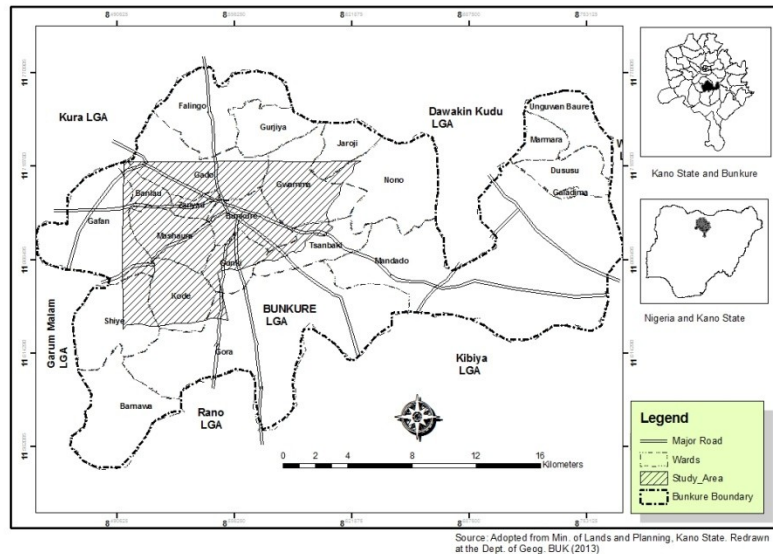


Figure 1: Bunkure Local Government and Study area

The weather and climate of the area play a great role on the agricultural practices and are favourable to large scale cultivation of cereals, groundnuts, beans and vegetables. The socioeconomic activities of the people are also closely linked with the seasons, with crop production dominating during the wet season and off-farm activities (*ci rani*) dominating during the dry season while some engaged in irrigation activities (Maryam, Halima and Umami, 2014; Usman (2014); KNARDA (2001); MARDITECH (2011); and Buba (2000).

Thus, the Netherlands Development Company (NEDECO, 1974) has recognized the following landform units in the area: a storm channel (also called "floodplain") which is flanked by a low terrace which rises steeply from the channel, a high terrace separated from the low terrace by a steep wall, and an upland plain, also separated from the high terrace by a steep wall (Olofin, 2013). The area is dominated with hydromorphic soils with basement complex (Ahmed, 2006) and poor nutrient status (Esseit, 2013).

The population of Bunkure LGA shows that in 1991 with 122,856 while in 2006 rose to 170,891 with the population density of 241.76 in 1991 and 336.28 in 2006 (NPC, 2006). Majority of the people in the area are farmers.

III. Methodology

3.1 Types of data

Data to be obtained include: Soil Textural map, Soil laboratory analysis, Satellite image of 5 meter resolution (Spot-5) and Digital elevation model (DEM) data from Shuttle Radar Topographic Mission (SRTM)

3.2 Sources of Data

Both Primary and Secondary data were sourced for this study. Soil samples were taken from the depth of 0 – 30 cm using a grid of 1500 m x 1500 (Figure 2). In order to facilitate the field work and to ensure the accuracy of

the examination/sampling points, the points were uploaded on Global Positioning Systems (GPS) Garmin 76csx model and the soil examined and sampled according to MARDITECH (2011) Wollenhaupt *et al.*, (1994); Rehm *et al.*, (2001) and Umar (2011).

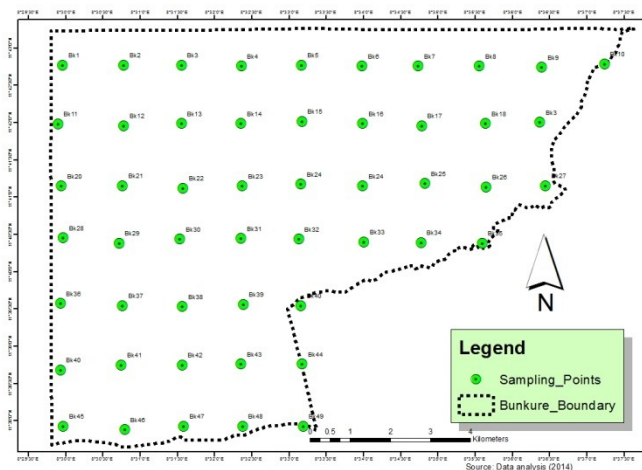


Figure 2: Sampling Points

Shuttle Radar Topographic Mission (SRTM) with the resolution of 90 meters were sourced (downloaded) from www.ftp://glcf/landsat. This was used in the creation and extraction of the Digital Elevation Model (DEM) which were used for developing the slope map of the area.

The soil texture map of the area with the scale of 1:25,000 published in 1976 produced by Netherlands Development Company (NEDECO) was sourced from the Kano State Ministry of Agriculture. This was used in the extraction of the soil boundaries, soil drainage and soil units in the area.

Spot-5 satellite imagery with a 5 meter resolution for 2012 was sourced from the Archive of the National Remote Sensing Center (NRSC), Kano. This was already rectified and corrected and was used for land unit identification and landuse classification of the area. Also, data and related information for the suitability of the selected crops were sourced from literatures.

3.3 Methods and Procedure for Data Collection

A preliminary survey was carried out in the area. The purpose of the survey was for the researcher to be acquainted with the environment, and to help in the soil unit's identification using the soil characteristics map (base map), and to re-establish the research and the selection of the crops for this study.

3.4 Field survey and data collection

A grid cells were prepared on the base map for sampling. Fifty one (51) soil samples were identified to the distance of 1500 x 1500 meters and were collected in the field (Figure 2) using the USDA Soil Survey Manual (Soil Survey Staff, 1981). At each soil site, a GPS (Global Position Systems, Garmin 76x model) reading was used in taking the coordinates. The field equipments and tools that were used in collecting the soil samples includes the soil auger, digital camera, Munsell color chart (USDA, 1994), 30 meters measuring tape and pH and EC kits. Figure 3. summarized the methodology.

IV. Data Analysis

The data analyses were divided into two parts: these are the laboratory and GIS based analysis.

4.1 Laboratory Analysis

The samples were taken to the Standard laboratory (Department of Geography Bayero University Kano) air dried and gently crushed with porcelain pestle and mortar; and then passed through a 2mm sieve to remove coarse fragments. The fine earth samples (<2mm soil portion) collected were analysed. Particle size distribution was determined using hydrometer method (Gee and Bauder, 1986). Sand, silt and clay was determined by dispersing the soil samples in 5% calgon (sodium hexametaphosphate) solution. The dispersed samples were shaken on a

reciprocating shaker after which particle size distribution was determined with the aid of Bouyoucous hydrometer at progressive time intervals. The textural classes were determined with the aid of USDA textural triangle.

The soil pH was determined both in water and 0.01M CaCl₂ solution, using a soil to solution ratio of 1:2.5 (IITA, 1979). On equilibration, pH was reading with a glass electrode on a Pye- Unicam model 290mk pH meter. Delta pH (dpH) values were determined. The Walkley – Black (1934) wet digestion method were used to determine the organic carbon content of the soil samples. Total nitrogen was determined using the macro – kjedhal method. Soil available phosphorus was determined using the Bray I method calorimetrically. Electrical Conductivity was determined using Bower and Wilcox (1965).

Exchangeable Ca, mg, Na and K were extracted with 1m ammonium acetate (1M NH₄OAc) solution buffered at pH 7.0 as described by Anderson and Ingram (1998). Potassium and Salinity in the extract were read on a Gallenkamp flame Analyzer. The extracts were diluted two times with the addition of 2ml of 6.5% lanthanum chloride solution to prevent ionic interference before Ca and Mg was read. The Ca and Mg were read on a pye uncam model SP 192 atomic absorption spectrophotometer (AAS) at 423 and 285nm wavelength respectively. The sum of Ca, Mg, Na, and K gave total exchangeable bases.

The soils were leached with 1m KCl solution. Exchange acidity (Al+H) in the 1m KCl extract was determined by titration with 0.1m sodium hydroxide solution as described by Anderson and Ingram (1998). Cation Exchange Capacity (CEC) of the soil were determine with 1m NH₄OAc (1m ammonium acetate), buffered at pH 7.0 (Chapman 1965, Rhodes, 1982). The excess acetate was removed by repeated washing with alcohol. The absorbed ammonium ions were displace with 10% sodium chloride (pH 2.5) and determined by the Kjeldahl procedure (Soil Survey Staff, 1972).

4.2 GIS Analysis

For the identification of the agricultural landuse, Spot-5 satellite images were digitized using “on-screen” in the Arc GIS 10.1 environment. Different land classes were identified in the area which includes agricultural land, built up areas, vegetation, water body and wetland. This analysis was performed according to Nuhu and Ahmed (2013) where each land unit was coded for easy classification and identification.

The soil textural map were scanned and imported into Arc GIS10.1, then geo-referenced by using four (4) Ground Control Points (GCP) that were read from UTM. For registration process (image geo-referencing), some modifications were made during the geo-referencing for the selected control points in order to minimize the error during digitization. The map was projected to WGS 1984 using Minna datum, UTM zone 32. The soil drainage was extracted from the map using “on screen digitization” query and overlay from the scanned map were performed. The shape files of the soil drainage and soil units were converted to raster format using 5 meters resolution; in this case the resolution of the satellite was adopted. The soil unit was also extracted from the map with the combination of the satellite image (Spot-5). The slope of the area were analysed using Digital Elevation Model (DEM) which were extracted from Shuttle Rader Topographic Mission (SRTM) data. The slope was reclassified by converting the values (slope angles) into percentage and also adopting the satellite image resolution (5 meters).

4.3 Suitability Criteria for Sorghum

The weighted factor was estimated by pair wise comparison matrix (Saaty 1980) based on land characteristics. After structuring the problem as a hierarchy using the Eigenvector. The criteria weight for physicochemical parameters were performed together with the other factors like the slope, soil drainage, land units, soil depth, soil texture and land uses (see Table 1).

Table 1: Soil-site suitability criteria for sorghum

Land Use requirement	Highly suitable	Moderately suitable	Marginally suitable	Not Suitable
Soil Nutrient	(S1)	(S2)	(S3)	(N)
pH	6.0-8.0	5.5-5.9 & 8.1-8.5	< 5.5 & 8.6-9.0	< 9.0
N (%)	> 1.0	0.50-1.0	0.1-0.5	< 0.1
P (ppm)	> 8.0	5-7	4-5	< 4.0
K (cmol/kg)	> 0.40	0.20-0.40	0.15-0.20	< 0.15
Ca (ppm)	> 10.0	8.0-10.0	4.0-8.0	< 4.0
Mg (ppm)	> 4.0	2-4	0.5-2.0	< 0.50
Na (ppm)	0.01-0.03	0.03-0.05	0.05-0.10	> 0.10
OC (%)	0.50-0.75	0.50-0.20	< 0.20	-
OM (%)	> 5	5-3	3-1	< 1
CEC(cmol/kg)	30-20	20-10	< 10	-
Soil Texture	c, cl, sicl, sc	l ,sil, sic, scl	sl, ls	S

Land Quality				
Slope (%)	0-4	3-8	8-16	> 16
Soil condition	Deep soil	Deep soil	Moderately deep	Shallow soil
Soil drainage	Well drained	Well Drained	Moderately drained	Poorly drained
Soil toxicity				
EC(ds/m)	2-4	4-8	8-10	> 10

Note: clay-c, clay loam-cl, silt clay loam-sicl, silt clay-sc, loam-l, silt loam-sl, silt clay-sic, silt loam-sl, Loam sand-ls, sand-s.

Source: FAO (1979), Metson (1961), USDA (1993), Bungham, (1962), MAFF (1967) and Van Diepen, Van Keulen, Wolf and Berkhout, (1991).

Geo-processing model were used to execute the sequence of command to generate physical suitability maps which were developed in the Fuzzy and AHP model for all the parameters or factors, while the Model Builder was used in combining all the layers to generate the final suitability map. The suitability for each chemical and physical parameters were generated individually and classified using Analytical Hierarchy Process (AHP)

The analysis for pH showing in Figure 3C that the most suitable area is (S1) 5236.26 ha (52.83%). While the moderately suitable (S2) 2604.86 ha (26.28%), marginally suitable (S3) 2001.00 ha (20.20%) and not suitable (N) with 68.40 ha (0.69%). More than 50% is within the suitable class for sorghum, however pH value is strongly related to BS-% within a soil testing class, and can be used as an indicator or index of certain chemical reactions occurring in the soil. At very low pH, solubility of Al, Mn and Zn increase, and can become toxic to sensitive plants. At high pH values, the solubility of Mn, and to a lesser extent Zn and Cu, can become so low that sorghum are unable to obtain adequate supplies from the soil. The acceptable pH range varies for each soil class.

The analysis for Organic Matter (OM) in Figure 3E shows that the area for moderately suitable (S2) having 19.61 ha (0.20%), marginally suitable (S3) with 3309.08 ha (33.39%) and area not suitable (N) for sorghum shows that 6582.53 (66.41%). Soil organic matter (OM) according to London (1988) is distinguished by its high moisture retention, low plasticity, low cohesion, and the dark color it imparts to the soil. These in turn lead to the favorable physical properties such as high water holding capacity, more stable structure, improved tilth, and more rapid water infiltration associated with mineral soils having significant organic matter content.

The electrical conductivity (EC) is an indicator for determination of saline soils, the analysis in Figure 3I shows that the suitability (S1) for sorghum having 1506.34 ha (15.20%), moderately suitable (S2) 4259.10 ha (42.97%), while the marginally suitable with (S3) 1597.48 (16.12%) and areas that are not suitable with (N) 2548.30 ha (25.71%).

The CEC affects the way a soil should be managed for sorghum cultivation. For example, a soil with a low CEC (less than 5 meq/100g) generally has a low clay and organic matter content, has a low water holding capacity, requires more frequent lime and fertilizer additions, and is subject to leaching and such soils will have lower yield potential than soils with higher CEC under the same level of management, but high productivity can be maintained by intensive management (Steven, 1998). The CEC values ranging within the marginally suitable (S3) with 9911.22 ha (100%) (Figure 3B) this indicated that the soil of area contained CEC that is marginally suitable for sorghum.

Nitrogen (N) is the element most frequently lacking for optimum sorghum production. Nitrogen recommendations will vary with expected yield, soil texture, and cropping sequence (Grain Sorghum Production, 1998). The analysis for total Nitrogen (N) in Figure 3H shows that the suitable area with (S1) 67.12 ha (0.68%), moderately suitable (S2) 1339.35 ha (13.51%), marginally suitable (S3) 8483.68 ha (85.60%) and not suitable (N) with total area of 21.07 ha (0.21%).

The suitability for magnesium (Mg) for sorghum requirement shows that the area is generally affected by deficiency in Mg. In cereal crops, Mg deficiency symptoms include *interveinal chlorosis* on the lower leaves. Leaf edges may also show a thin hint of red or purple (London 1988). On broad-leaved crops, the lower leaves of Mg deficient plants may initially show interveinal chlorosis and become purplish-red with green veins. Because, the result indicated that marginally suitable (S3) with 1158.96 ha (11.69%) and not suitable (N) with 8752.26 ha (88.31%) (Figure 3J).

Potassium (K) is also relatively weak in the area the analysis indicated that the suitable area (S1) for sorghum in Figure 3K is occupying 520 ha (5.25%) of the area while moderately suitable (S2) 3416.47 (34.47%), marginally suitable (S3) 3560.97 ha (35.93%) and not suitable (N) 2413.76 ha (24.35%).

Calcium (Ca) deficiency results in poorly developed root systems and relatively little fruit of poor quality. Foliage symptoms are extremely variable. Since Ca is immobile in the plant, affected plants may display malformed young leaves and abnormal terminal growth. Calcium is not readily leached from the soil, although levels may be

quite low in sandy surface soils. Deficiencies rarely occur in crops other than peanuts, potatoes and vegetables subject to blossom end rot (London, 1988). In this study Ca shows that the area is dominated by low to very low values particularly for sorghum cultivation. The suitable area shows that (Figure 3A) (S1) 0.86 ha (0.01%), marginally suitable (S3) with 1536.74 ha (15.51%) and not suitable within (N) 8373.62 ha (84.49%).

The analysis of total sodium (Na) shows that suitable area (S1) with 35.28 ha (0.36%), moderately suitable (S2) with 647.89 ha (6.54%) while marginally suitable (S3) having the area of 4405.46 ha (44.45%) and the area that is not suitable with 4822.59 ha (48.66%) (Figure 3G).

The suitability Phosphorus (P) in the area having more of the land that is within the threshold for sorghum cultivation. This is an indication of having the suitable land (S1) with 8630.16 ha (87.07%) and the moderately suitable (S2) with 1128.53 ha (11.39%) while marginally suitable with 150.89 ha (1.52%) and areas with not suitable (N) within 1.64 ha (0.02%). Therefore, the area contained high amount of Phosphorus (Figure 3D). This is unique among the anions, it has low mobility and availability in soils. It is difficult to manage because it reacts so strongly with both solution and solid phases of the soil. As a result, mobility through the soil is extremely limited in all but organic soils or white bleached sands with extremely low CEC's. Concentrations in soil solution range from less than 0.1 to around 5 ppm. Most crops respond to P additions when soil solution levels are less than 0.1 to 0.2 ppm (London, 1988).

The landuses in the area were also analysed as a criteria for sorghum suitability classes and the result shows (Figure 3P) that the agricultural land is the most suitable area for the cultivation. The result indicated that the suitable (S1) area from the land use category is within 7919.47 ha (79.90%) followed by moderately suitable (S2) with 1526.95 ha (15.41%), marginally suitable (S3) 24.76 ha (0.25%) and not suitable within 440.04 ha (4.44%).

Soil texture is one of the determinants of the potentiality of a soil to hold nutrients and most of the physical characteristics of the soil depend upon it. In this study the suitability for Sorghum was determined and about four different classes of soil texture were identified in the area, this includes sandy clay loam, sandy loam, clay loam and complex soils (the combination of two different soils) and all were tested for suitability, the result shows that (Figure 3L) areas with suitable texture with (S1) 30.26 (0.31%) while moderately suitable (S2) 7162.99 ha (72.27%) and the area occupied by marginally suitable (S3) within 1910.16 ha (19.27%) the area that is not suitable (N) with 807.81 ha (8.15%).

The result of the soil drainage in the area shows that three classes of soil drainage were identified and analyzed these includes well drained, moderately and poorly drained soils, the suitable areas (S1) for sorghum is within 8455.91 ha (85.32%) while moderately suitable (S2) with 1112.19 ha (11.22%) and not suitable (N) with 343.12 ha (3.46%) (Figure 3M).

Table 2: Suitability classes for Sorghum in the study area

Suitability classes	Na		OC		EC		K	
	Area (ha)	(%)	Area (ha)	(%)	Area (ha)	(%)	Area (ha)	(%)
Suitable (S1)	35.28	0.36	1934.66	19.52	1506.34	15.2	520.02	5.25
Moderately suitable (S2)	647.889	6.54	1666.28	16.81	4259.10	42.97	3416.47	34.47
Marginally suitable (S3)	4405.46	44.45	6127.23	61.82	1597.48	16.12	3560.97	35.93
Not suitable (N)	4822.59	48.66	183.05	1.85	2548.30	25.71	2413.76	24.35
Total	9911.22	100	9911.22	100	9911.22	100	9911.22	100
Suitability classes	pH		N		OM		Ca	
	Area (ha)	(%)	Area (ha)	(%)	Area (ha)	(%)	Area (ha)	(%)
Suitable (S1)	5236.26	52.83	67.1193	0.68	0	0.00	0	0.00
Moderately suitable (S2)	2604.86	26.28	1339.35	13.51	19.61	0.20	0.86	0.01
Marginally suitable (S3)	2001.70	20.20	8483.68	85.60	3309.08	33.39	1536.74	15.51
Not suitable (N)	68.396	0.69	21.0698	0.21	6582.53	66.41	8373.62	84.49
Total	9911.22	100	9911.22	100	9911.22	100	9911.22	100
Suitability classes	P		Mg		CEC		Soil Texture	
	Area (ha)	(%)	Area (ha)	(%)	Area (ha)	(%)	Area (ha)	(%)
Suitable (S1)	8630.16	87.07	0	0	0.00	0.00	30.26	0.31
Moderately suitable (S2)	1128.53	11.39	0	0	0.00	0.00	7162.99	72.27
Marginally suitable (S3)	150.89	1.52	1158.96	11.69	9911.00	100.00	1910.16	19.27
Not suitable (N)	1.64	0.02	8752.26	88.31	0.00	0.00	807.813	8.15
Total	9911.22	100	9911.22	100	9911.22	100	9911.22	100
Suitability classes	Land Use		Slope		Soil Drainage		Soil Depth	
	Area (ha)	(%)	Area (ha)	(%)	Area (ha)	(%)	Area (ha)	(%)
Suitable (S1)	7919.469	79.90	4128.27	41.65	8455.91	85.32	5344.37	53.92
Moderatly suitable (S2)	1526.954	15.41	2498.63	25.21	1112.19	11.22	3492.40	35.24
Marginally suitable (S3)	24.75948	0.25	2360.83	23.82	0.00	0.00	0.00	0.00

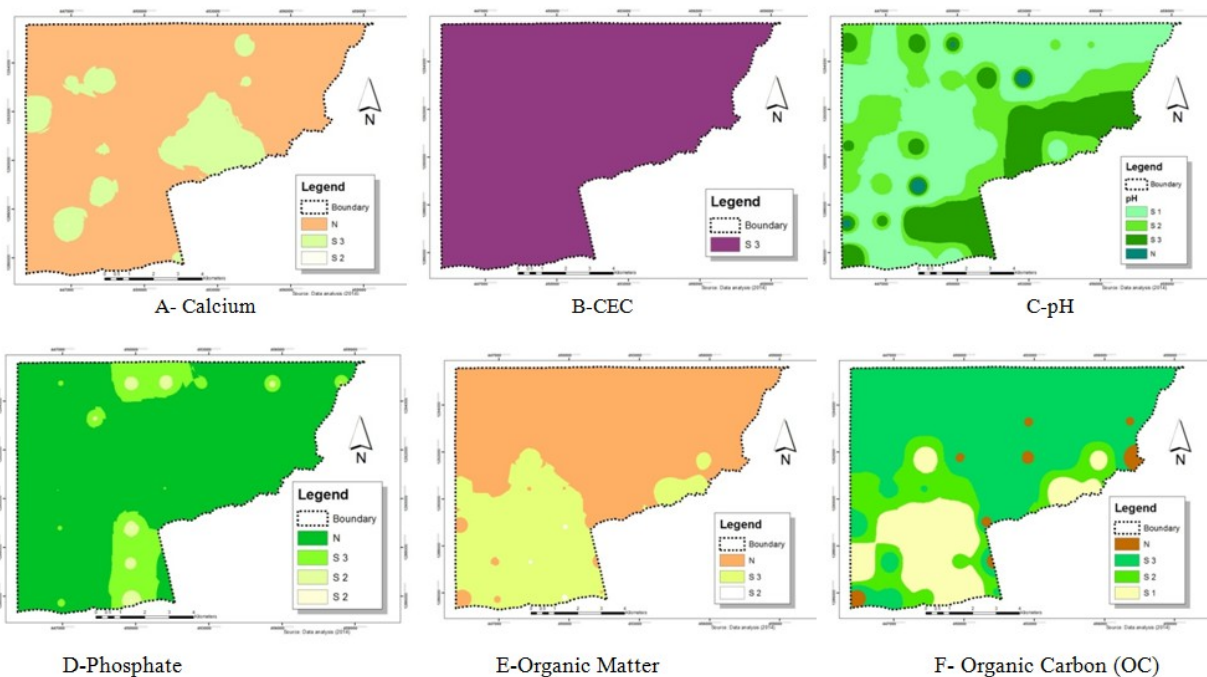
Land Suitability for Sorghum Using Multicriteria Evaluation (MCE) and Analytical Hierarchy Process

Not suitable (N)	440.0379	4.44	923.49	9.32	343.123	3.46	1074.45	10.84
Total	9911.22	100	9911.22	100	9911.22	100	9911.22	100
Soil Units								
Suitability classes	Area (ha)	(%)						
Suitable (S1)	9537.45	96.23						
Moderately suitable (S2)	373.77	3.77						
Marginally suitable (S3)	0.00	0.00						
Not suitable (N)	0.00	0.00						
Total	9911.22	100						

Sources: Data analysis (2014)

Slope of an area determines the rate of erosion and is one of the factors used in this study for determination of suitable areas for sorghum. Classification has been determined from Digital Elevation Model (DEM) for the suitability classes. Four classes were identified ranging between 0 – 4%, 4 – 8%, 8 – 10% and greater than 10%. The result shows that suitable area (S1) with 4128.27 ha (41.65%), while moderately suitable (S2) within 2498.63 ha (25%), marginally suitable (S3) 2360.83 ha (23.82%) and area that is not suitable (N) with 923.49 ha (9.32%). The result of this analysis in Figure 3N indicated that the southern part of the area is affected by badland topography and erosion.

Soil depth is another important factors used for suitability analysis for cultivation of a particular crop. In this study the soil depth were classified and weighted into deep, moderately deep and shallow soils and the result indicated that the suitable area (S1) for sorghum with 5344.37 ha (53.92%) while for moderately suitable (S2) with 3492.37 ha (35.24%) and the area for not suitable (N) to be 1074.45 ha (10.84%). The soil unit were categorized as upper and lower terrace which were tested for the suitability for sorghum and found out that the suitable area (S1) with 9537.45 ha (96.23%) while for moderately suitable (S2) with 373.77 ha (3.71%).



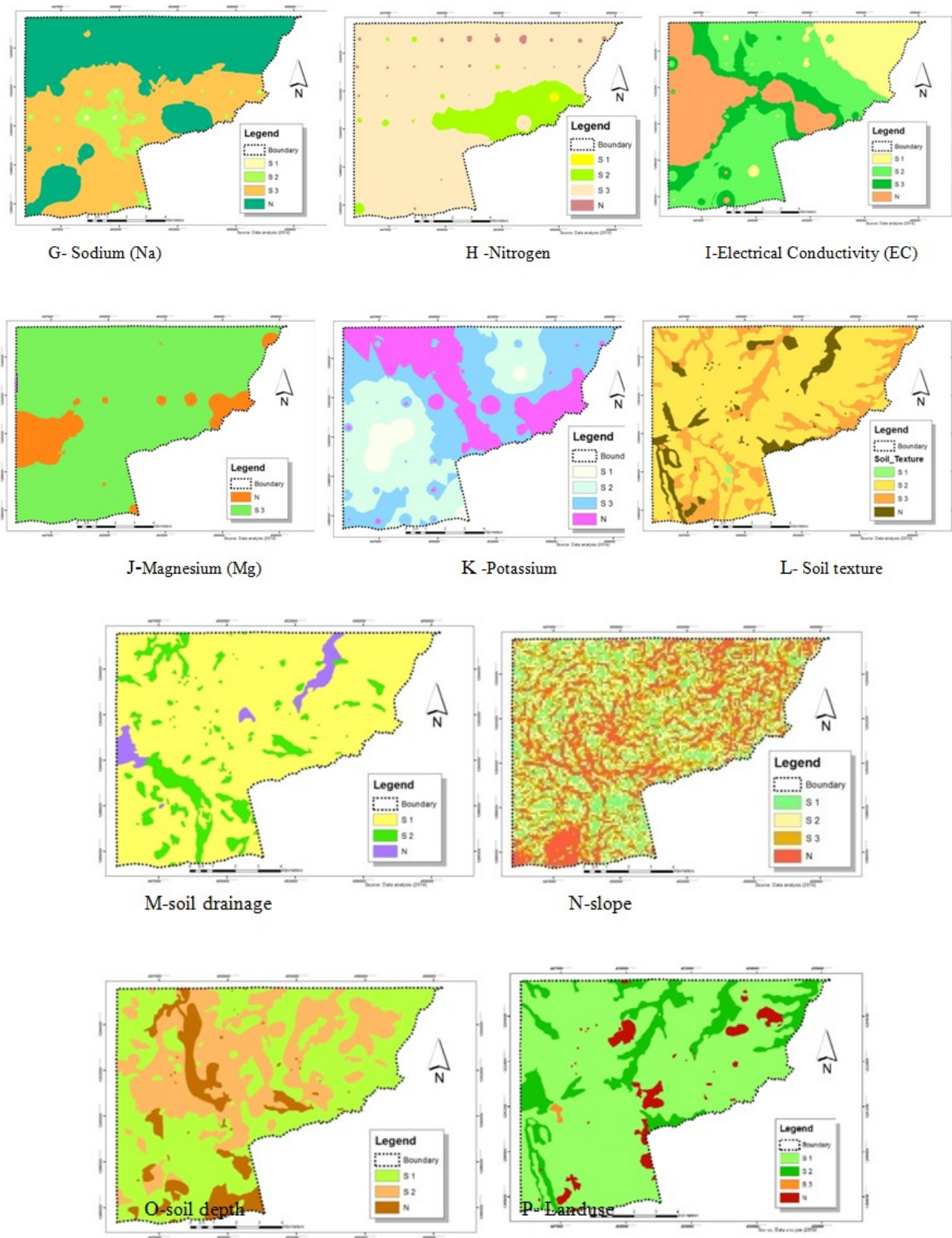


Figure 3: Suitability Criteria for Selected Parameters for Sorghum Cultivation

Note: A= Calcium (Ca), B = Cation Exchange Capacity (CEC), C = pH, D = Phosphorus (P), E = Organic Matter (OM), F = Organic Carbon (OC), G = Sodium (Na), H = Nitrogen (N), I = Electrical Conductivity (EC), J = Magnesium (Mg), K = Potassium (K), L = Soil texture, M = Soil drainage, N = slope (%) and O = Soil depth and P = Landuse.

4.4 Combined layers (themes) for Sorghum suitability

The pairwise comparison matrix for all the criteria of sorghum cultivation, were weighted of the alternatives, the final rate were calculated the final suitability map. Model Builder as shown in Figure 4 was used in combining the thematic layers produced in Figure 3 from the AHP and Fuzzy analysis was performed in the weighted overlay operations.

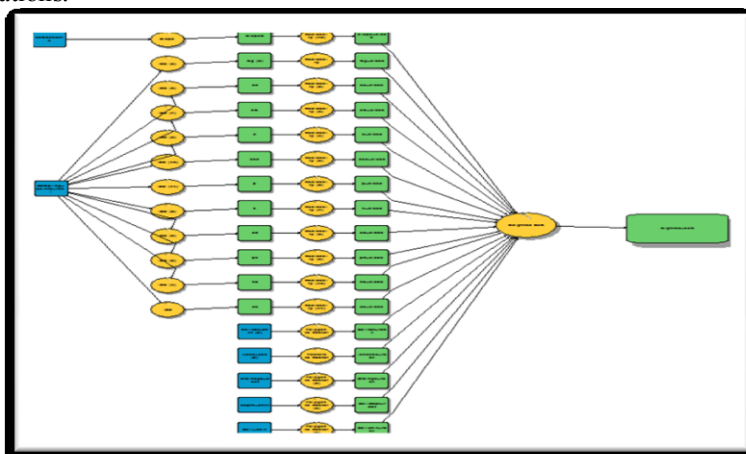


Figure 4: Model Builder

The result of the analysis (Figure 3) shows that the highly suitable area that meet up with all the requirement is within (S1) 860.91 ha (8.69%). This area has all the quality that is requires (most suitable) to cultivate sorghum. According to NEDECO (1976) is Hydromorphic in nature it mostly consist of silt and some combination of loamy soils, clayey and sand that developed within the terraces which is good for cereal crops.

While, the suitable area (S2) with 1712.15 ha (17.27%). This land has constraints which can be overcome by little investment. The area is affected by low levels of plant nutrients especially low organic matter (OM), high electrical conductivity (EC) and little erosion. Perennial crops are thus more suitable for this area (USDA, 2009). Moderately shallow soil depth, making agriculture possible only with little management, minimum tillage and careful erosion control. The limitations will reduce productivity or benefits, and increase required inputs to the extent that the overall advantage to be gained from the use, although still attractive, will be appreciable inferior to that expected on (S1) class I land.

The moderately suitable (S3) with 2407.61 ha (24.29%) this area is falling within the irrigated field in the study area which is affected by salinity, poorly drained and low nutrients. However, the land is having limitations which, in aggregate are severe for sustained application of given use and will so reduce productivity or benefit or increase required input, that this expenditure will be only moderately justified.

Marginally suitable (S4) having the area with 3568.67 ha (36.01%), but the area is affected by severely erosion, shallow soils, very low organic matter and slopping topography. It is dominated by an undifferentiated texture there by making the soil to be sandy. However, the land having limitations which may be surmountable in time, but which cannot be corrected with existing knowledge at currently acceptable cost; the limitation are too severe as to preclude successful sustained use of the land in the given manner.

The area not suitable (N) for sorghum cultivation is 1361.88 ha (13.74%), this area is generally affected by badland topography, rocky outcrops, complex texture and very poor nutrient; others include water bodies and poorly drained soils which are generally not suitable for cultivation. Land having limitations which appear as severe to preclude any possibilities of successful sustained use of the land to the given manner.

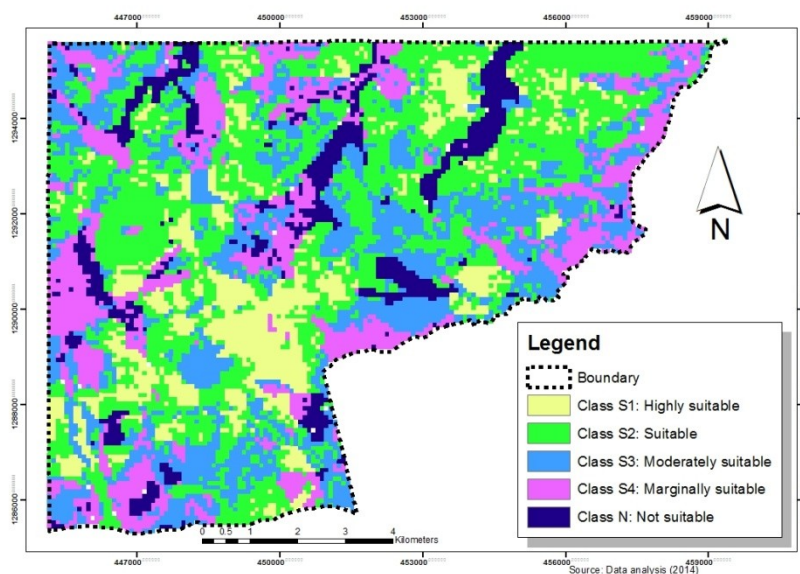


Figure 5: Suitability classes for Sorghum

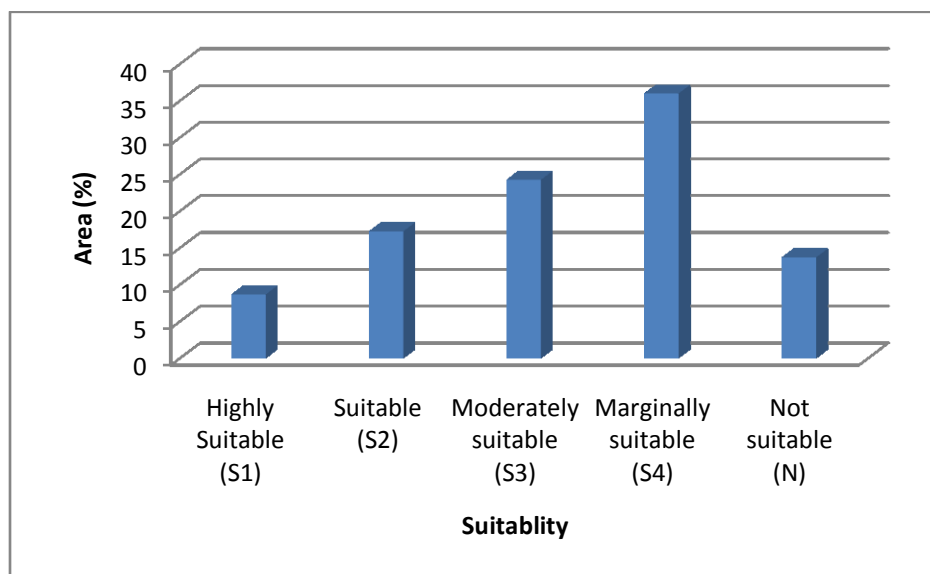


Figure 6: Area for Suitability classes for Sorghum

V. Conclusion And Recommendation

This research demonstrated the applications of GIS and spatial analysis through selection of the criteria which were weighted through Multi Criteria Evaluation, Analytical Hierarchy Process (AHP) and Fuzzy logic were used in facilitating the challenges of delineating boundaries because of the uncertainty in the suitability mapping.

The suitability for sorghum cultivation from the parameters shows that pH, Phosphorus (P), soil drainage, slope, soil unit and soil depth are within acceptable suitable range. While, those falling within moderate to marginal are OM, CEC, N and K. And Ca is low when comparing with sorghum requirement. The final analysis shows that 8.69% of the area is highly suitable covering of the land, while 17.27% is suitable and 24.29% is moderately suitable, marginally suitable with 36.01% and lastly area not suitable is with 13.74%. The study concluded that the soil of the area is affected with salinity and low soil nutrients which can be control by proper management, it recommend for proper use of fertilizer (organic and inorganic).

References

- [1]. Adamu G. K. (2014). An Assessment of The Surface Characteristics and Potentials of Fadama Soils in The Reaches of Two Major Streams in Kano State, Nigeria. Unpublished PhD. Theses submitted to the Department of Geography Bayero University Kano.
- [2]. Agbede, T.M., Ojeniyi S.O. and Adekayode, F.O. 2009: Effect of Tillage on Soil Properties and Yield of Sorghum in Southwest Nigeria. *Nigerian Journal of Soil Science* 19(2), 1 – 10.
- [3]. Ahmed, K. (2006) The Physical Environment of Kano State, www.kanostate.net/physicalenvironment.html.
- [4]. Alexandratos, N. (Ed), (1995). *World Agriculture: Towards 2010*. An FAO study. FAO/Wiley, Rome/Chichester.
- [5]. Anderson, J.M. and Ingram, J.S.I. (1998): *A hand book of methods*. 2nd edn., CAB International, Wallingford U.K. p. 37.
- [6]. Baffa M. A. (2012) Problems of Crop Water Requirement on Irrigation Plots at Bunkure LGA. Kano State. An Unpublished Bsc. Theses submitted to the Department of Geography Bayero University Kano, Nigeria
- [7]. Breman H., (1998) Amelioration de la fátilité des sols en Afrique de l’Ouest: contraintes es perspectives. In Renard, G., Neef, A., Becker, K., Von Oppen, M. (Eds.), *Soil Fertility Management in West African Land Use Systems*. Margraf Verlag, Weikersheim, pp. 7-20.
- [8]. Buba, L. F (2010) Spatio Temporal rainfall and temperature variation in Northern Nigeria. An Unpublished PhD thesis Submitted to the Geography Department Bayero University Kano, Nigeria
- [9]. Bungham A (1962) Chemical Test for Available Phosphorus. *Soil Science* 94, 87-95.
- [10]. Carver, S.J., 1991. Integrating multi-criteria evaluation with geographical information systems. *International Journal of Geographical Information System*, 5: 321-339.
- [11]. Chakhar S and V. Mousseau (2008), ‘GIS-based Multicriteria spatial modeling generic framework’. *International Journal of Geographical Information Science*, vol. 22, pp. 1159–1196
- [12]. Chapman H.D. (1965) Cation Exchange Capacity. In :Black C.A (ed). *Methods of Soil Analysis*. Part 2. American Society of Agronomy, Madison. Pp. 1149-1178
- [13]. Chen Y. J. Yu., K. Shahbaz, and E. Xevi (2009), “A GIS-Based Sensitivity Analysis of Multi-Criteria Weights”, presented at the 18th World IMACS / MODSIM Congress, Cairns, Australia, July 13-17.
- [14]. Cleaver K.M., and Schreiber, G. A., (1994) Reversing the spiral: the Population Agriculture and Environment Nexus in sub-Saharan Africa. The World Bank Washington DC
- [15]. Coulter E. D., J. Sessions, and W.G Michael, W.G (2003). “Scheduling Forest Road Maintenance Using the Analytic Hierarchy Process and Heuristics”, *Silva Fennica*, vol .40, pp. 143–160.
- [16]. Dugje, I. Y. Kamara A. Y and. Ajeigbe H (2009) Biophysical Characterisation of Crop Fields in Sudan Savanna Zone of North Western Nigeria: Kano-Katsina-Maradi Pilot Learning Site Sudan Savanna Agro-Ecological Zone Innovation Platform. Sub Saharan Challenge Programme for Integrated Agricultural Research for Development. International Institute of Tropical Agriculture (IITA, Research to Nourish Africa)
- [17]. Elaalem E, A. Comber, and P. Fisher, (2001) “A Comparison of Fuzzy AHP and Ideal Point Methods for Evaluating Land Suitability”, *Transactions in GIS*, vol.15, pp. 329- 346.
- [18]. Elaalem M. (2012) Land Suitability Evaluation for Sorghum Based on Boolean and Fuzzy Multi-Criteria Decision Analysis Methods *International Journal of Environmental Science and Development*, Vol. 3, No. 4.
- [19]. Esseit U. E. (2013) Soils. Geography of Kano region. Tanko and Mumale S, B. (Eds) Kano Environment, Society and Development. London and Abuja, Adonis and Abbey Publishers
- [20]. FAO (1979) Soil Survey Investigation for Irrigation. Soil Bull No. 42 FAO Rome
- [21]. FAO, (1976). A framework for land evaluation. Food and Agriculture Organization of the United Nations, Soils Bulletin 32. FAO, Rome.
- [22]. FAOSTAT (Food and Agriculture Organization/Statistics (2012). Trade data base, Production data base <http://faostat.fao.org/>
- [23]. Foli (2012) Qualitative and quantitative diagnosis of macro and micronutrient deficiencies in soils across three agro-ecological environments of northern Nigeria using the double-pot technique MSc internship report Plant Production Systems group Course code: PPS-70424 Wageningen University. From <http://www.n2africa.org>
- [24]. Gee G. W. and J. W. Bauder. (1986): Particle size analysis. In ‘Methods of soil analysis, Part 1’.Vol. 9.(Ed. A. Klute) pp. 91–100.American Society of Agronomy: Madison,WI.
- [25]. Gruhn, P., Goletti, F., and Yudelman, M., (2000). Integrated Nutrient Management, Soil Fertility, and Sustainable Agriculture: Current Issues and Future Challenges, Agriculture and the Environment Discussion Paper 32. International Food Policy Research Institute, Washington.
- [26]. Henao, J. and Banaante, C., (1999) Estimating Rates of Nutrient Depletion in Soils of Agricultural Lands of Africa, International Fertilizer Development Center, Mussel Shoals, AL.
- [27]. IITA. (1979). Selected methods for soil and plant analysis. International Institute of Tropical Agriculture. Manual series No. 1 pp 70.
- [28]. John S., Antonia M., and Randy K. (2004) Take Good Soil Sample to help make good decision. Iowa State Univ. File code Agronomy 8-5
- [29]. KNARDA (Kano Agricultural and Rural Development Authority) (2001). Development Area Statistics.
- [30]. London J.R. (1988). Toward a standard field assessment of soil texture for mineral soils. *Soil survey and land Evaluation* 8 (3) 161-165
- [31]. Mahler, R.L. and T. A. Tindall (1990) Soil sampling. Univ. Idaho Coop. Ext. Bull. 704 (revised)
- [32]. Malczewski, J. (2006). GIS-based multicriteria analysis: a survey of the literature. *International Journal of Geographic Information Science*, 20: 703–726.
- [33]. MARDITECH (2011), Development of a GIS-Based Soil Suitability Classification for Rice Production in Kano State, Nigeria, Unpublished Interim Report submitted to the Kano State Government, MARDITECH, Kuala Lumpur, Malaysia
- [34]. Maryam L, Halima A. Idris and Umni K. Mohammed (2014) Weather and Climate. In A.I Tanko and S.B. Mumale (Eds.) Kano Environment, Society and Development. London and Abuja, Adonis and Abbey Publishers
- [35]. Metson A.J (1961) Method of Chemical analysis for soil survey samples. New Zealand DSIR. Soil Bur Bull Govt. Printer, Wellington New Zealand.
- [36]. Mortimore M. and Harris F. (2003) Do small farmers’ achieve contradict the nutrient depletion scenarios for Africa? *Land use policy* 22 43-56 Elsevier

- [37]. NEDECO, (Netherlands Dev. Company) (1976). Kano River Irrigation Project (KRIP) Main Report. Part VIII. Ministry of Agriculture and Natural Resources, Kano, Nigeria.
- [38]. NPC (2006) National Population Commission
- [39]. Nuhu Z and Ahmed M (2013) Agricultural Landuse in Sub-urban Lafia of Nasarawa State, Nigeria. Part-ii: Social Sciences and Humanities ISSN-I: 2223-9553, ISSN: 2223-9944 Vol. 4 no. 4 avap international www.savap.org.pk www.journals.savap.org.pk
- [40]. Ofor, M.O I.I Ibeawuchi and A.M.Oparaeke (2009) Crop Protection Problems in Production of Maize and Guinea Corn in Northern Guinea Savanna of Nigeria and Control Measures Nature and Science;7(11)
- [41]. Olofin E. A. (1985). Human Responses to the Natural environment in the Kano Region. In: Barkindo, A. A. (ed). Kano and its Neighbours. ABU Press, Zaria.
- [42]. Rehm, G.W., A.P. Mallarino, K. Reid, D. Franzen, and J. Lamb. (2001). Soil sampling for variable-rate fertilizer and lime application. North Central Multistate Report 348 - NCR- 13 Committee. Minnesota Agricultural Experiment Station Bull. 608-2001. Univ. of Minnesota, St. Paul., MN.
- [43]. Rhoades, J.D. (1982). Cation exchange capacity. In Page, A.L., Miller, R.H. and Keeney, D.R. (eds). Methods of Soil Analysis. Part 2 Agron 9. Madison WI. PP 149-157.
- [44]. Saaty, T.L. (1980). The analytic hierarchy process: McGraw Hill International., New York.
- [45]. Sekitani, K. and N. Yamaki (1999), "A logical interpretation for the eigenvalues method in AHP". Journal of the Operations Research Society of Japan, vol. 42, pp. 219-232, 1999.
- [46]. Soil Survey Staff. (1972). Soil Taxonomy. U.S. Dept. Agric. Handbook 436. U.S. Govt. Printing Office, Washington D.C
- [47]. Soil Survey Staff. (1981). Keys to Soil Taxonomy, 8th edition. USDA Natural Resource Conservation Service, U.S. Government Printing Office, Washington DC.
- [48]. Steven C., (1998) Managers/Management of soil erosion. In: Management Practices for Maintaining soil Productivity in the douglas-fir region (Ed) Sam D. Angima and Thomas A. Terry. In Best. Oregon State University. Extension service
- [49]. Stoorvogel, J., Smaling, E., and Janssen, B., (1993). Calculating soil nutrient balances in Africa at different scales: I. Supra-national scale, Fertile. Res., 35, 227 – 235
- [50]. Tanko A.I. (2001), Some Physical and Chemical Changes in Soils, and their Agricultural Implications under large-scale Irrigation in Kano Region, Northern Nigeria, Proceedings of Faculty Seminar Series Vol 1, Faculty of Social and Management Sciences, Bayero University Kano pp 247-269.
- [51]. Umar, G. (2011) Assessment of the Fertility Status of some Irrigated Fluvisols in Northern Guinea Savannah of Nigeria. Volume 6 (1); Savannah Journal of Agriculture ISSN 1597 9377 Faculty of Agriculture, Bayero University
- [52]. USDA (1993), U.S Dept. of Agriculture. Soil Survey Manual
- [53]. USDA (2009), Natural Resources Conservation Service. Planting And managing switch grass as a biomass energy crop. Plant Materials Program. (<http://plantmaterials.nrcs.usda.gov/pubs/NPMtechnotes/npmptn3-13079.pdf>). Accessed 12/08/ 2014
- [54]. Usman A (2014) Rainfall variability in Kano region. Unpublished Msc. Theses submitted to the Geography Department Bayero University Kano, Nigeria
- [55]. Van Diepen C.A, Van Keulen H., Wolf J., and Berkhout J.A.A (1991) Land Evaluation from Intuition to Quantification. In BA. Stewart (ed) Advance in Social Science Springer New York 139-204 pp.
- [56]. Van Ranst E., H.Tang, S. Groenemans, and S. Sinthurahat (1996), "Application of fuzzy logic to land suitability for rubber production in peninsular Thailand". Geoderma, vol.1, pp. 1-19
- [57]. Walkley, A. and Black, A. (1934). An examination of Degtjareff Method of Determining Soil Organic Matter and a proposed modification of the chromic acid titration method. Soil Science 37: 29-38.
- [58]. www.ftp://glcf/landsat
- [59]. White, H. and Killick, T., (2001) African Poverty at the Millennium. The World Bank, Washington DC.
- [60]. Wollenhaupt, N.C., R.P. Wolkowski, and M.K. Clayton. (1994) Mapping soil test phosphorus and potassium for variable-rate fertilizer application. J. Prod. Agric. 7:441-448.